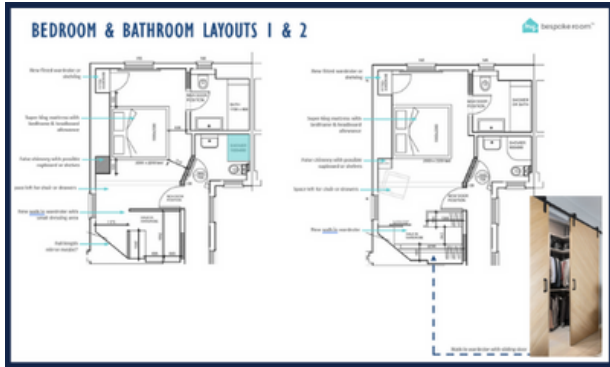


Our Bespoke Consultancy Packages

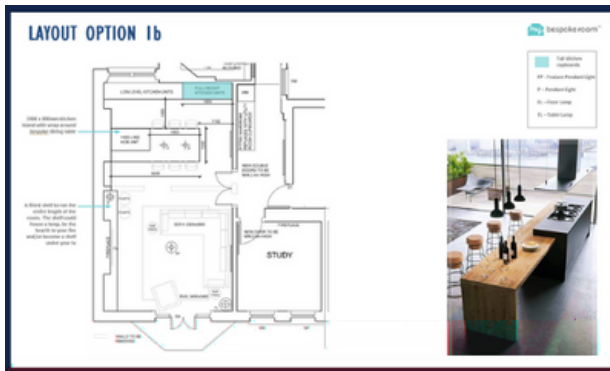
£65 per hour starting from £195

Our bespoke consultancy packages could be the perfect solution if you're not ready for one of our Room Design Packages. Get in touch to get a quote:

[Get in touch](#)



[Click to see the example](#)



[Click to see the example](#)

1. Spatial and layout planning

Who is this service perfect for?

For those building an extension, reconfiguring an existing space or building from scratch. An Interior Designer will help you get the best result from your investment and help you avoid expensive mistakes.

What to expect:

- Send us your working drawing file from your architect (estate agent plans with full dimensions are fine but it takes us a little longer to draw them up)
- Send us inspirational images - the more the merrier! This will give us a strong idea of what your style is
- Jump on a call with your designer. They'll drill into who you are, how you live and what you'll use the space for
- Your designer will send over layout options for you to feed back on
- Your designer will also send notes and inspirational images to help you visualise elements of your new layout

[▶ Watch how it works](#)

2. Design direction

Who is this service perfect for?

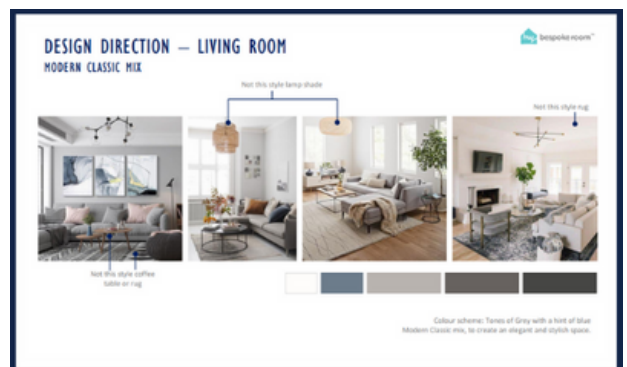
Are you taking on the daunting task of designing a whole home or floor?! Then this is the service for you to get a clear and cohesive flow throughout your home.

What to expect:

- Send us your floor plan to get started
- Send us inspirational images - the more the merrier! This will give us a strong idea of what your style is
- Jump on a call with your designer. They'll drill into who you are, how you live and what you'll use the space for
- Your designer will send over carefully considered images for you to follow along with with notes on how to achieve the look
- They will also send over an agreed colour scheme for each room so that your home flows well



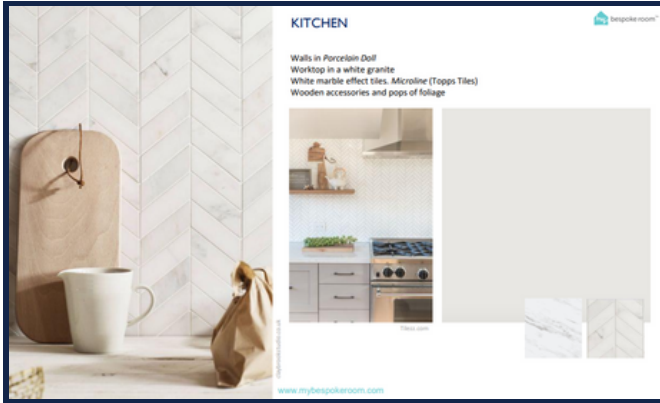
[Click to see the example](#)



[Click to see the example](#)



[Click to see the example](#)



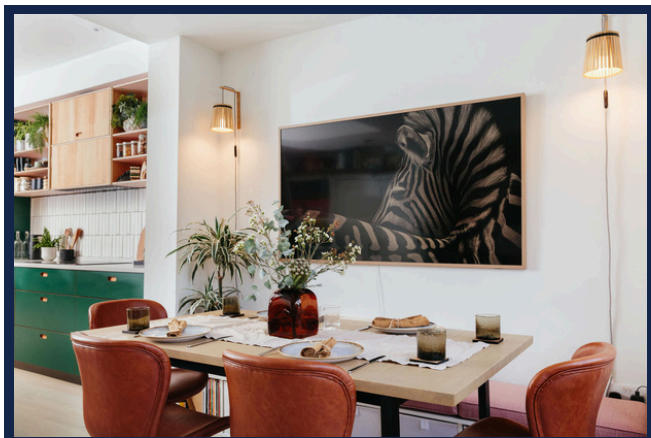
4. Storage consultancy

Who is this service perfect for?

If you feel like you're constantly tripping over clutter in your home then you've come to the right place. Our designers are highly experienced at looking over a house layout and identifying clever storage solutions to make your life more organised and clutter free.

What to expect:

- A call to understand what your current issues are and what you'd like to achieve
- An annotated floor plan identifying opportunities for built in bespoke storage options
- Ideas for smart storage options, either bespoke or items available to purchase
- Suggestions for paint colours, materials and finishes for any bespoke storage solutions as well as guidance on style and handles



3. Colour consultancy

Who is this service perfect for?

Choosing between an endless sea of colour options can be extremely daunting (yes there really are that many variations of white!) Our colour consultancy is designed for anyone who needs help choosing a cohesive colour palette for their whole home. Whether you're looking for the confidence to go bold or need help with a tricky space - this is the service for you.

What to expect:

- Your designer will provide you with a colour scheme to follow and a shopping list of specific paints to use where in each room.



5. Decorative lighting consultancy

Who is this service perfect for?

Many consider lighting to be among the finishing touches of a design but trust us - plan it out early! A carefully considered lighting scheme will make or break your new space as it affects how functional it is and how it feels.

What to expect:

- Your designer will provide you with a lighting plan to determine the best layout for all decorative light fittings and where to place your sockets within the space
- You will receive guidance on how to layer your lighting and which fittings are best where
- Your designer will guide you on the style of light fittings which are best for your space and give you suggested options

Get in touch